



Quebrada **Yanacué** - (Cantagallo, Bolívar)
another landscape of the serranía de San Lucas.
Photo: **Luz Dary Acevedo** - **WCS Colombia**

En Terreno

WCS Colombia Newsletter – November 2016- No. 10



Green iguana
(*Iguana iguana*)
Photo: **Catalina Gutiérrez**
WCS Colombia



www.wscolumbia.org



WCS.Colombia



@WCSColombia



**Wildlife
Conservation
Society**

FUNDACIÓN



MARIO SANTO DOMINGO.
Por el Desarrollo Social de Colombia



El Jardín Village
San Pablo (Bolívar)

Photo: Luz Dary Acevedo - WCS Colombia

SOCIOECONOMIC DIAGNOSIS IN SERRANÍA DE SAN LUCAS

Conservation initiatives dissemination
within the framework of the declaration of a protected area in the region.



Albeiro Mafia Village, San Pablo (Bolívar)
Photo: Luz Dary Acevedo - WCS Colombia

As a first step in this task, researchers from the Peasant Farmer Association of the Cimitarra River Valley (**ACVC, by its acronym in Spanish**), Natural National Parks of Colombia (**NNP**), and **WCS Colombia** took a tour that included the following villages: Carrizal, Cancha de Manila, and Alto Tamar, in Remedios (Antioquia); El Jardín and Santa Rosa (Bolívar); and La Fría, Alto Cañabral, Montecarlo, and Alto San Juan, in San Pablo (Bolívar).

The various meetings with the communities allowed to raise **awareness about the importance of conserving biodiversity and the natural resources provided by this mountainous area**. Also, the peasants that live in this region had the opportunity to clear up queries and concerns about it.

The tour also included the Santo Domingo river canyon. **In this area, the experts verified the conservation state of forests, water quality, and the presence of threatened primate and bird species.**



Quebrada Taracué, San Pablo (Bolívar)
Foto: Luz Dary Acevedo - WCS Colombia



Photo: Lina Caro - WCS Colombia



Photo: Lina Caro - WCS Colombia

“SALDAÑA RIVER, A BASIN OF LIFE”

First collectivization of the project.

The meeting, which was held in the small town of **Bilbao, municipality of Planadas (Tolima)**, was led by researchers of **Natural National Parks of Colombia and WCS Colombia**. Different community leaders, peasants from the region, and representatives of the local association **Asotbilbao** attended the meeting, as well as officials of the Regional Autonomous Corporation of Tolima (**Cortolima**, by its acronym in Spanish) and of the **town hall of Planadas**.

The collectivization included a presentation about **Nevado del Huila Natural National Park, where the basin of interest starts: Siquila**, which is the subbasin of the Saldaña River. Furthermore, the main objective of this project and the steps of the first phase (diagnosis) were also analyzed during the meeting.

As part of the initial activities of this phase, **the threats that affect the Cambrin and Siquila subbasins and their causes will be identified**. This will allow to plan future conservation actions and their monitoring. Likewise, it is intended to mobilize and engage communities and governmental and sectoral entities, **so that this initiative is strategically positioned on public agendas to create favorable conditions that result in sustainability for the project in the long run**.

The project **“Saldaña River, a basin of life”** aims to reduce threats affecting the supply of environmental services related to the water resource in the upper part of this river. **Natural National Parks, Cementos Argos, and WCS Colombia are part of this public-private alliance**.



SNAPP WILL SUPPORT A STUDY ABOUT THE IMPACT OF THE CHANGE ON LAND USE IN THE COLOMBIAN ORINOCO REGION

Researchers of the International Center for Tropical Agriculture (CIAT), Wildlife Conservation Society (WCS), and The Nature Conservancy (TNC) will lead the project.

The objective of the proposal submitted to the Science for Nature and People Partnership (SNAPP) is to **evaluate the impact of the expansion of agricultural activities and the consequent change in land use on biodiversity and some ecosystem services in the region.**

El Tuparro Natural National Park - Photo: **Mauricio "Pato" Salcedo - WCS Colombia**

This information, along with other analyzes conducted with experts and other key actors, will allow exploring possible transformation scenarios and identifying potential conflicts, as well as the opportunities for a sustainable development in the Orinoco region.

The main outcome of this research is to create a decision making tool for land use and multi-scale practices and policies, whose main users are government entities responsible for land development planning (the National Planning Department, municipal governments, and regional environmental authorities).

***SNAPP:** Science for Nature and People Partnership. It was founded by the Wildlife Conservation Society – WCS, The Nature Conservancy, and the National Center for Ecological Analysis and Synthesis (NCEAS).



Photo: Giovanni Cárdenas - WCS Colombia

MEETING ABOUT THE SONSO LAGOON

It is the largest and the most representative remaining area of the wetlands of Valle del Cauca.

The workshop arose as part of WCS Colombia's support for the proposals of the Autonomous Regional Corporation of Valle del Cauca (CVC) for the protection of the flooded wetlands of the Cauca River in the Valle del Cauca department. The meeting was the first step to develop a biodiversity monitoring program in the Integrated Management Regional District of Sonso lagoon.

During the meeting, the experts reviewed the objectives, the values object of conservation (VOC), and the threats against them. The WCS team also used this space to present the **SMART*** tool, showing its advantages and benefits for the control and surveillance carried out by **CVC** officials.

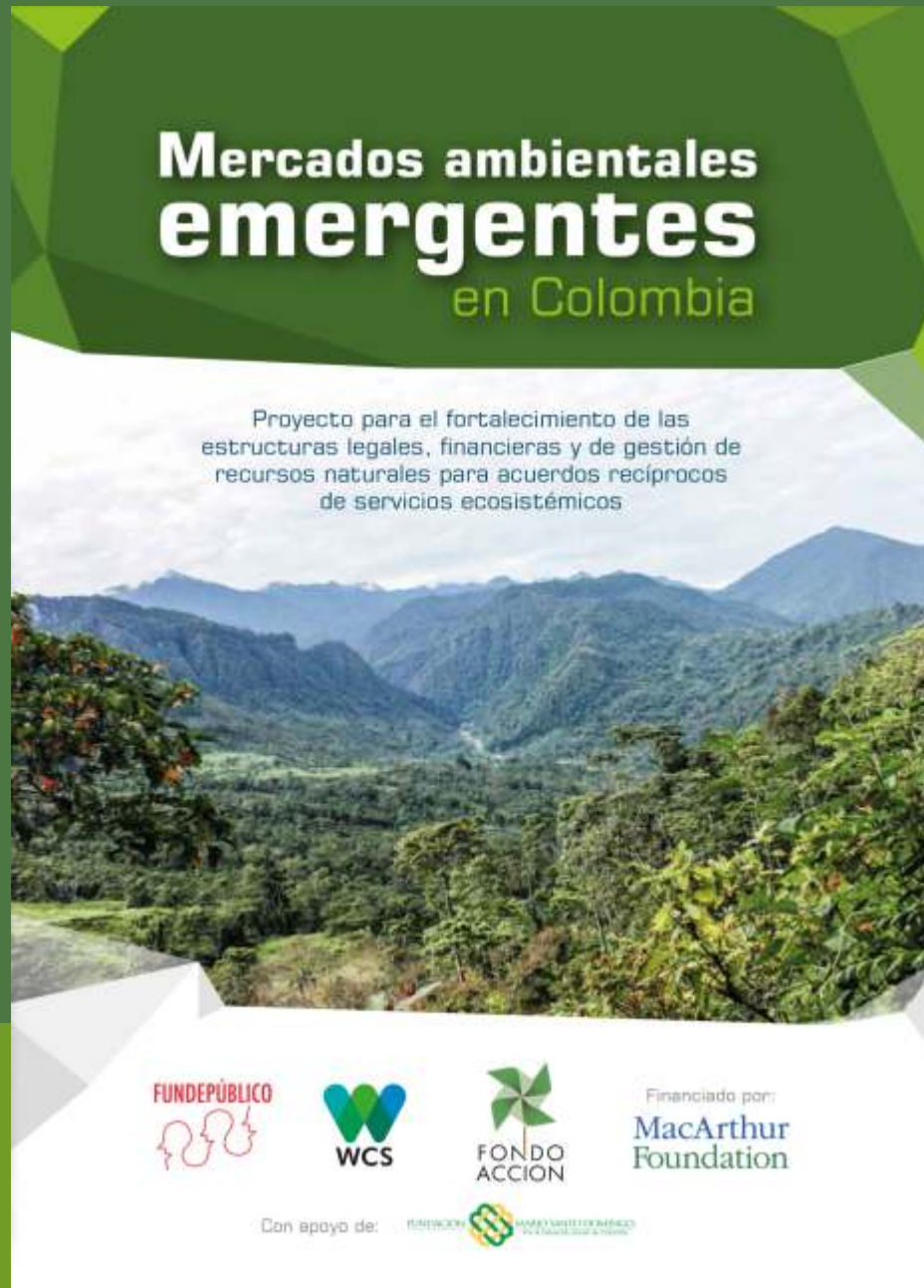


Photo: Giovanni Cárdenas - WCS Colombia

The invitation was attended by **members of the Biodiversity Group of the Environmental Technical Directorate**, the Central-South Regional Administrative Directorate and Planning of the CVC, as well as several representatives of the **Calidris Association and Asoyotoco**.

***SMART: Spatial Monitoring and Reporting Tool.** Spatial Monitoring and Reporting Tool. It is a monitoring and spatial information tool that allows to collect, analyze, and evaluate relevant information about prevention, surveillance, and control in protected areas.

RECOMMENDED PUBLICATION



Emerging Environmental Markets in Colombia. A work of **Fundepúblico**, **WCS Colombia**, and **Fondo Acción**, funded by the **MacArthur Foundation** and the support of **Fundación Mario Santo Domingo**.

Download it here: <http://bit.ly/2d1usoT>

Go to: www.mercadosambientalescolombia.com



OUR SPECIES: **MORICHE PALM** (*Mauritia flexuosa*)

It is a great water purifier. It mainly grows in areas with periodic or permanent flooding or poor drainage (gallery forests, swamps, or areas close to rivers). It can form dense palm groves, called **moriche swamps, canangucho palm swamps, or aguajal swamps**. These make up very rich communities that represent true oases in the savannas or in the complex humid rainforests.

The uncontrolled fires and the change in land use have caused a drastic reduction in moriche palm populations. WCS Colombia currently coordinates the Wildlife Project (Proyecto Vida Silvestre–PVS)*, an initiative in which the organization works in favor of this species in cooperation with Yoluka NGO.

Some of the PVS activities have included the building of nurseries and planting on surrounding lands of the **Bita river basin** to ensure the propagation and conservation of this emblematic palm.

PVS: *The Wildlife Project works for the conservation of ten species of flora and fauna in the Middle Magdalena and the Eastern Plains. It is funded by Ecopetrol and coordinated by WCS Colombia. Ten implementing organizations are part of this initiative, which is supported by Fundación Mario Santo Domingo.